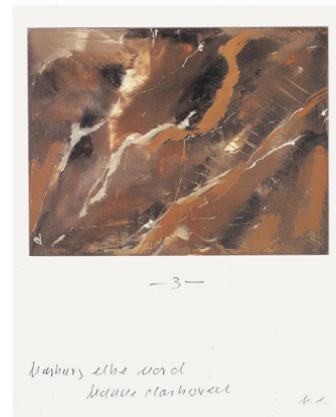


## SCHELLMANNART



### Hanne Darboven - Künstlicher Marmor... 1998

[Künstlicher Marmor, Kirche Neuenfelde,  
Harburg Elbe Nord]

Three grano lithographs, printed in six colors  
on Rives rag paper. Each print 50 x 40 cm  
(19<sup>3</sup>/<sub>4</sub> x 15<sup>3</sup>/<sub>4</sub>"), each signed and numbered.  
Edition of 60.

Schellmann Art, attn. Bettina Mittler  
Ainmillerstrasse 25, 80801 München  
tel +49 89 38666080  
Tue - Fri 10 am - 6 pm  
munich@schellmannart.com