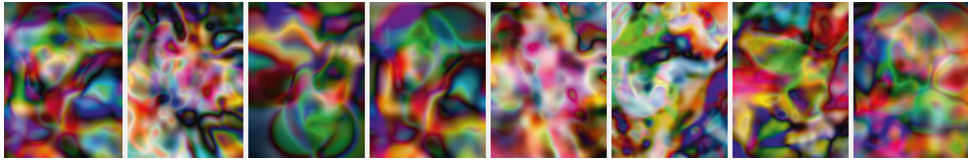


SCHELLMANNART



Thomas Ruff - Substrate 2009

8-part leporello, digital pigment print (Ditone) on
260 g Hahnemühle Baryta paper, 32 x 200 cm
(12½ x 78¾ in). Edition: 75, signed and numbered.

Schellmann Art, attn. Bettina Mittler
Ainmillerstrasse 25, 80801 München
tel +49 89 38666080
Tue - Fri 10 am - 6 pm
munich@schellmannart.com