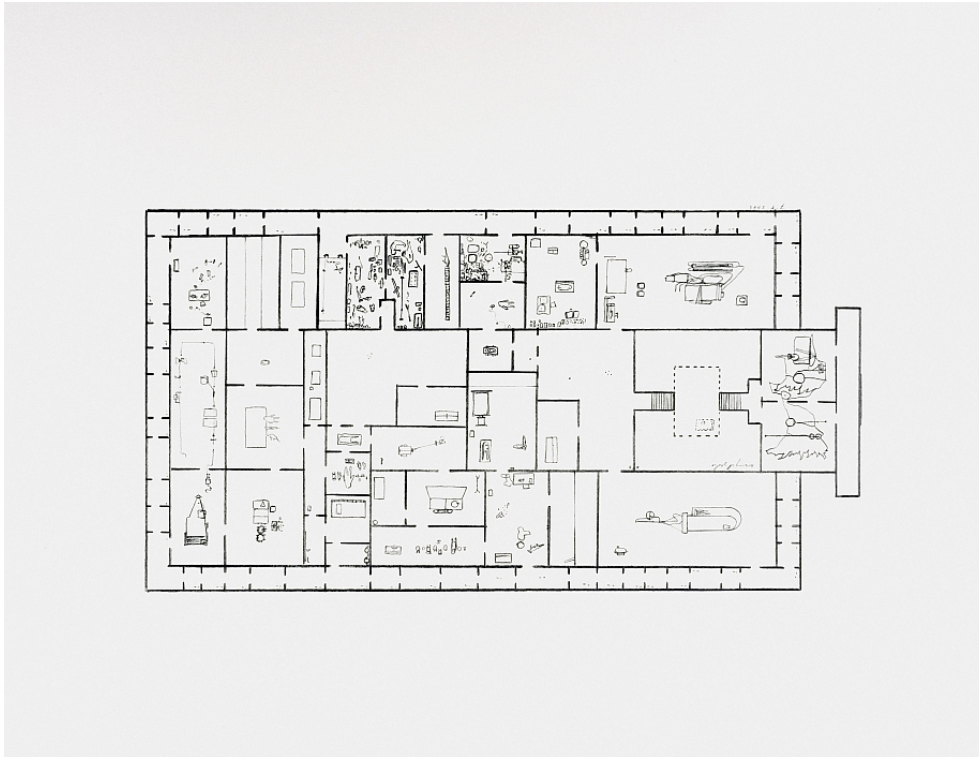


**SCHELLMANNART**



**Mark Manders - Provisional Floor Plan: Self Portrait as a Building 7-5-2002 2002**

published for Documenta11  
Diamond-screen offset print on cardstock,  
44 x 57 cm (17¼ x 22½"), edition of 40,  
signed and numbered.

Schellmann Art, attn. Bettina Mittler  
Ainmillerstrasse 25, 80801 München  
tel +49 89 38666080  
Tue - Fri 10 am - 6 pm  
[munich@schellmannart.com](mailto:munich@schellmannart.com)